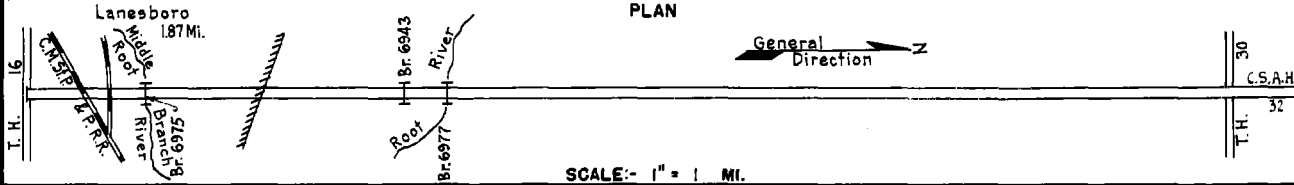


PREPARED BY
HIGHWAY PLANNING SURVEY
IN COOPERATION WITH
U.S. PUBLIC ROADS ADMINISTRATION

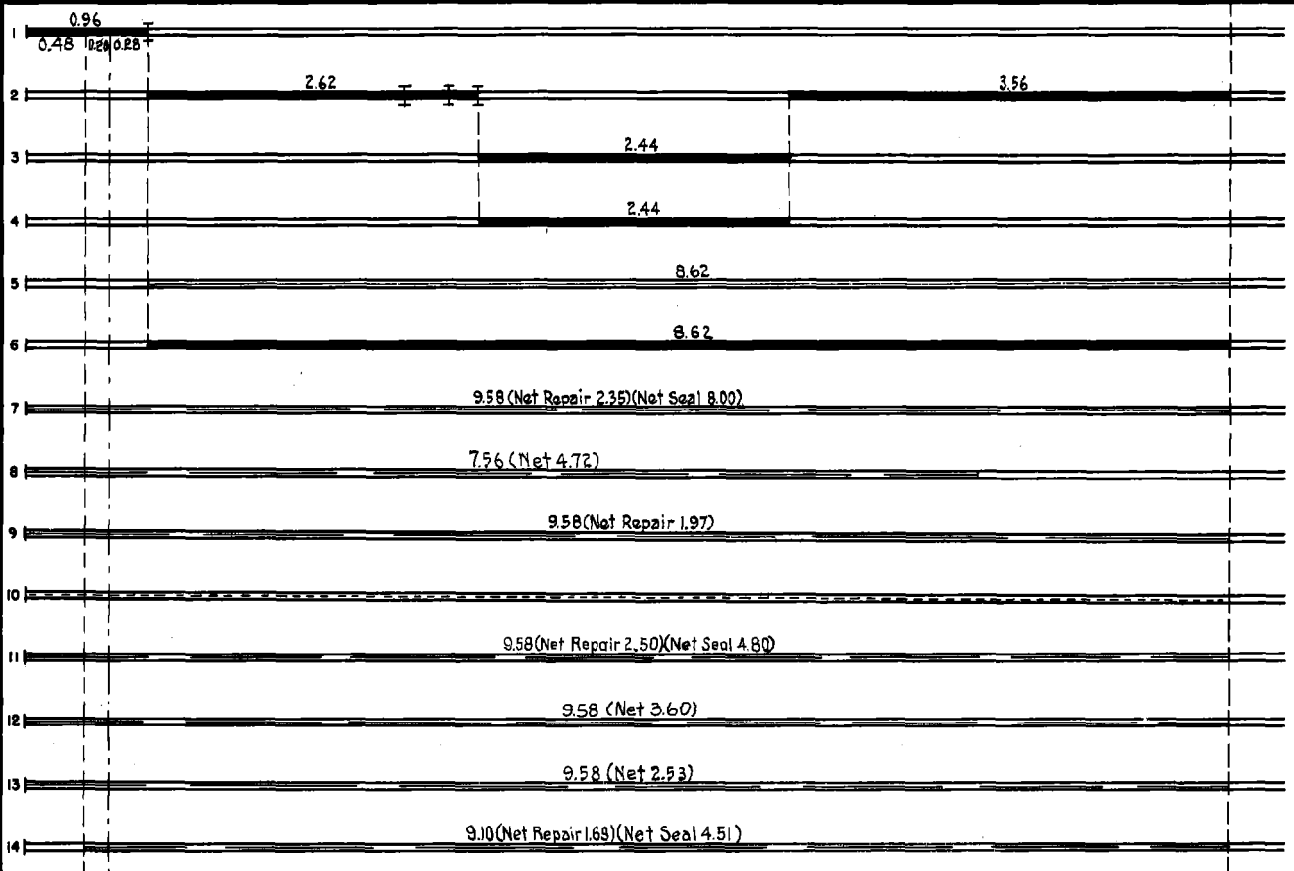
STATE OF MINNESOTA
DEPARTMENT OF HIGHWAYS
ROAD LIFE STUDIES
CONSTRUCTION PROJECT LOG RECORD

CONTROL SECTION 2319
TRUNK HIGHWAY 250
COUNTY Fillmore
DISTRICT 6A

LIMITS: Jct.T.H.16 in Lanesboro - Jct.T.H.30



YEAR BUILT	PROJECT N°	DESCRIPTION			CODE N°
		TYPE	WIDTH	THICKNESS	
		Mixed Bit. Bridge #6942	16'60"	19"	No Record of Const. Added in 1949 103' H.T.
		Gravel Br. 6943, 6944 & 6945	26'	5 3/4"	No Record of Const. Added in 1949 17 BS, 122 H.T. & 17 BS
1939	23-502-01	Grading	26'		Added in 1949
		Gravel	26'		No Record of Const. Added in 1949
M	1949 A.F.E. 6	Crushed Rock Resurfacing			3398 Tons
C	1970 A.F.E. 23	Bit Surfacing Mixed Bit	22'	1"	SC-3, 78183 Gal. Agg. 8297 Tons
M	1951 A.F.E. 4	Spot Treat. Bit Surf. Repair Spot Light Bit Seal	24'		MC3 & RCS-1, 28425 Gal. Agg. 1244 C.Y.
M	1952 A.F.E. 4	Spot Treat. Bit Surf. Repair and Seal	24'		MC-3, 34856 Gal. Agg. 1665 C.Y.
M	1953 A.F.E. 604 A.F.E. 605	Spot Treat. Bit Surf. Repair Light Bit Seal	24'	40'	MC3 & RCS2, 14071 Gal. Agg. 809 C.Y. (Seal from Mi. Pt. 000-065)
C	1954 A.F.E. 822	Guard Rail			2760 L.F.
M	1954 A.F.E. 604 A.F.E. 605	Spot Treat. Bit Surf. Repair Spot Light Bit Seal	24'		SC3 & RCS-1, 27538 Gal. Agg. 1364 Tons & 288 C.Y.
M	1955 A.F.E. 604	Spot Treat. Bit Surf. Repair	24'		SC-3, 25811 Gal. Agg. 1988 Tons
M	1956 A.F.E. 604	Spot Treat. Bit Surf. Repair	24'		SC-3, 16408 Gal. Agg. 1028 Tons
M	1957 A.F.E. 604 A.F.E. 605	Spot Treat. Bit Surf. Repair Spot Light Bit Seal	24'		SC3 & RCS-1, 26807 Gal. Agg. 1017 tons & 380 C.Y.



YEARS		TOTAL MILES	UNINCORPORATED		INCORPORATED		RURAL		URBAN	
FROM	TO		ROWY. MI.	BR. MI.	ROWY. MI.	BR. MI.	ROWY. MI.	BR. MI.	ROWY. MI.	BR. MI.
1949		9.58	7.68	0.03	1.85	0.02	7.68	0.03	1.85	0.02

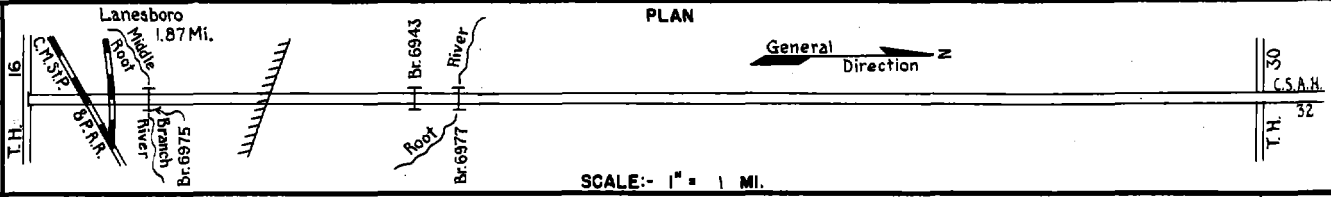
REMARKS: Layout is to scale as of 1949

PREPARED BY
HIGHWAY PLANNING SURVEY
IN COOPERATION WITH
U. S. PUBLIC ROADS ADMINISTRATION

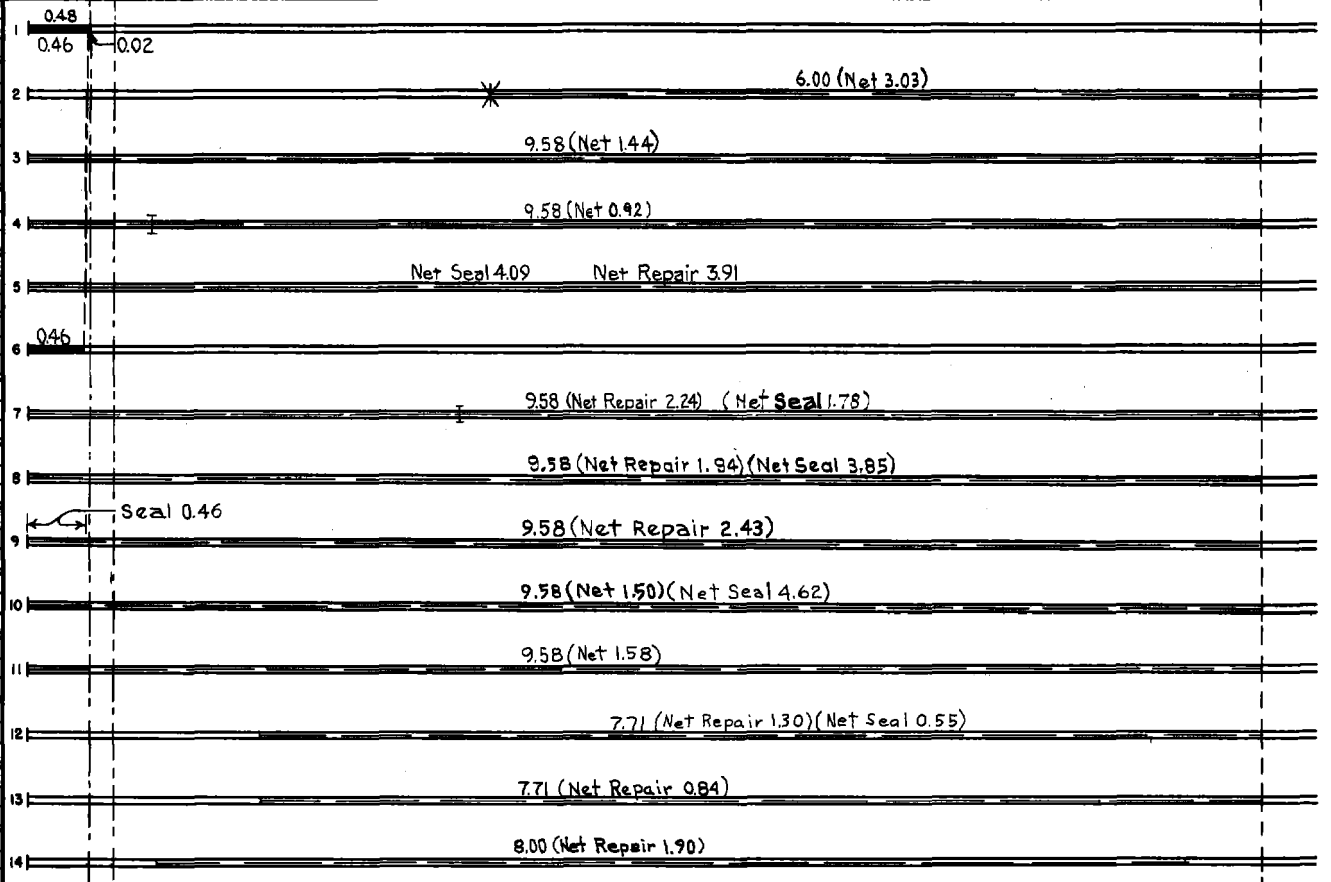
STATE OF MINNESOTA
DEPARTMENT OF HIGHWAYS
ROAD LIFE STUDIES
CONSTRUCTION PROJECT LOG RECORD

CONTROL SECTION 2319
TRUNK HIGHWAY 250
COUNTY Fillmore
DISTRICT 6A

LIMITS: Jct. T.H.16 in Lanesboro - Jct. T.H.30



YEAR BUILT	PROJECT N°	DESCRIPTION			CODE N°
		TYPE	WIDTH	THICKNESS	
C 1957	A.F.E. 818	Crushed Rock Base Mixed Bit.	30'	1"	
C&M 1958	A.F.E. 819 A.F.E. 604	66"x66" Port. Culv. Spot Treat Bit. Surf. Repair			Remove Br. 6945 SC-38 MC-3 14910 Gal. Agg. 1540 Tons
M 1959	A.F.E. 604	Spot Treat Bit. Surf. Repair	24'		SC-38 MC-2, 8796 Gal. Agg. 849 Tons
C&M 1960		Br. 6975 Spot, Bit. Surf. Repair	26' 24'		100 H.T. By Br. Crews No. 2 & 5 Mix Bit. 702 Tons
M 1961		Spot Bit. Surf. Repair Light Bit. Seal	24' 24'		SC-38 MC-2, 19450 Gal. 8473 Tons Bit. Mix MC-2, 6916 Gal.
C 1961	2319-02	Grading, Sub-base Cr. Rock Base Plant Mix Bit.	28' 24'	6" 3"	12" gravel & salvaged bit. sub-base
C&M 1962		Br. 6977 Spot Treat Bit. Surf. Repair	22' 24'		140 H.T. Built by Maint. Br. Crew No. 5
M 1963		Spot Treat Bit. Surf. Repair Spot Light Bit. Seal	24' 24'		Bit. Mix 1031 Tons Bit. 7333 Gal. Agg. 235 C.Y.
M 1964	C	Light Bit. Seal Spot Treat Bit. Surf. Repair	42' 24'		RS-2K, 1430 Gal. Agg. 52 C.Y. Bit. Mix 1275 Tons
M 1965	C SF	Spot Treat Bit. Surf. Repair Light Bit. Seal	24' 24'		MC-250 Tack 672 Gal. Rd. Mix 829 Tons Bit. Mix, 8074 Gal.
M 1966	SF	Bit. Surf. Repair	24'	3/4"	MC-250 Prime 1000 Gal. Bit. Mixture 600 Ton
M 1967	SF SF	Bit. Surf. Repair Light Bit. Seal	24' 24'	3/4"	Rd. Mix Bit. 729 Ton RC-250 Bit. 1152 Gal. Sand 24 C.Y.
M 1969	SF	Spot Bit. Repair	24'	1/2"	MC-250 Tack 1700 Gal. Agg. 440 C.Y.
M 1970	SF	Spot Bit. Repair	24'	1/2"	RC-250 Tack 2305 Gal. Agg. 487 Tons



YEARS FROM	TO	TOTAL MILES	UNINCORPORATED		INCORPORATED		RURAL		URBAN	
			RDWY. MI.	BR. MI.	RDWY. MI.	BR. MI.	RDWY. MI.	BR. MI.	RDWY. MI.	BR. MI.

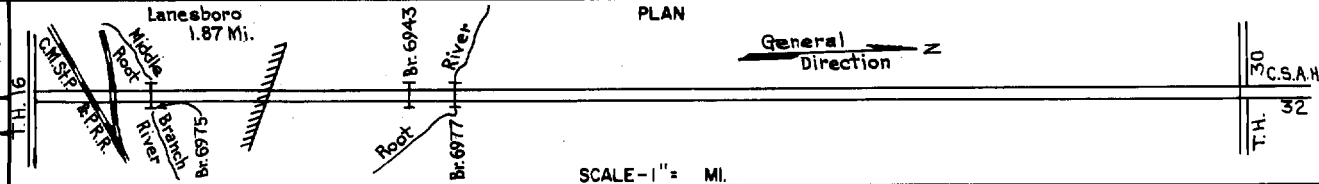
REMARKS: See Sheet No. 1

PREPARED BY
TRANSPORTATION & TRANSIT PLANNING & PROGRAMMING DIVISION
IN COOPERATION WITH
U.S. DEPARTMENT OF TRANSPORTATION-BUREAU OF PUBLIC ROADS

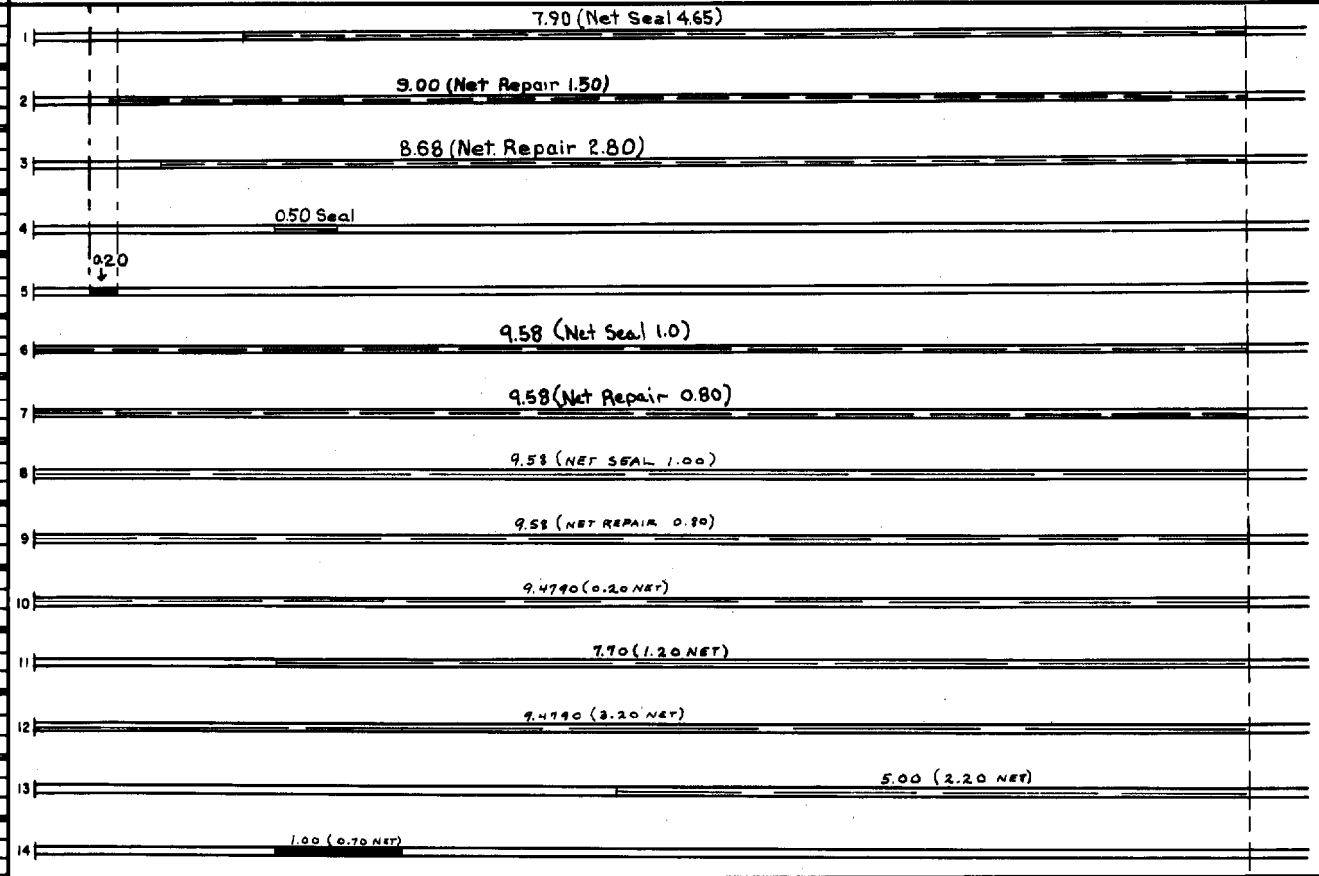
STATE OF MINNESOTA
DEPARTMENT OF HIGHWAYS
ROAD LIFE STUDIES
CONSTRUCTION PROJECT LOG RECORD

CONTROL SECTION 2319
TRUNK HIGHWAY 250
COUNTY Fillmore
DISTRICT 6A

LIMITS: Jct. T.H. 16 in Lanesboro - Jct. T.H. 30



YEAR BUILT	PROJECT NO.	DESCRIPTION			
		TYPE	WIDTH	THICKNESS	REMARKS
M 1971	SF	Seal Coat	22'		MC-800 Agg. in place 10,814 Ton
M 1972	SF	Spot. Surf. Repair	22' 1/2"		AC-800 1,350 Gal. Agg. 621 Tons
M 1972	SF	Bit. Surf. Repair	22'	1/2"	4620 Gals. Agg. 518 Tons
M 1972	SF	Seal Coat	42'		2000 Gals. Agg. 50 C.Y.
C 1973	2319-06	Grading, Bit Surface Curb & Gutter	52'	3'	
M 1974	SF	Seal Coat	22'		125 Tons
M 1974	SF	Bit. Surface Repair	22'	1"	324
M 1974	SF	SEAL COAT	22'		135 Ton
M 1974	SF	BIT SURFACE REPAIR	22'	1"	324 Ton
M 1975	SF	BIT PATCH REPAIR	24'	2 1/2"	316 Ton
M 1976	SF	RANDOM BIT OVERLAY	22'	1"	145.2 Ton
M 1976	SF	BAND SEAL COATING	22'		CRS-1 5978 GAL SAND 112 Cu. Yd.
M 1977	SF	RANDOM BIT OVERLAY	24'	4/8"	BR AC-1 2331 1275 Ton RC 800 Tack
M 1978	SF	BIT MAT OVER REPAIRED SECTION	24'	1 1/2"	P.Mix AC 2331 1387 Ton



YEARS FROM	TOTAL MILES TO	UNINCORPORATED		INCORPORATED		RURAL		URBAN	
		RDWY. MI.	BR. MI.	RDWY. MI.	BR. MI.	RDWY. MI.	BR. MI.	RDWY. MI.	BR. MI.

REMARKS: See Sheet No. 1

