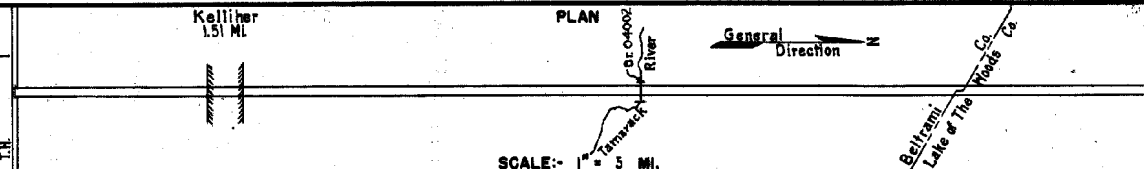


PREPARED BY
HIGHWAY PLANNING SURVEY
IN COOPERATION WITH
U.S. PUBLIC ROADS ADMINISTRATION

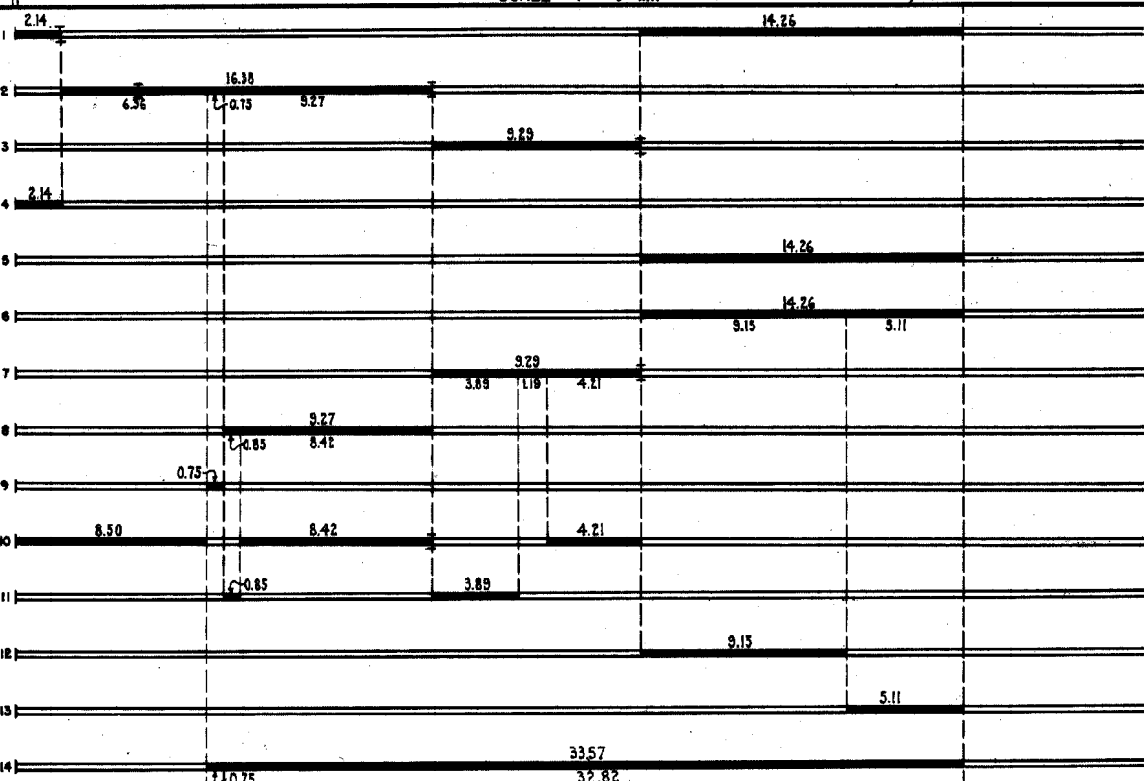
STATE OF MINNESOTA
DEPARTMENT OF HIGHWAYS
ROAD LIFE STUDIES
CONSTRUCTION PROJECT LOG RECORD

SHEET 1 OF 5
CONTROL SECTION 0413
TRUNK HIGHWAY 72
COUNTY Balttram
DISTRICT 2A

LIMITS: E.Jct. T.H.1 - North Co. Line



YEAR BUILT	PROJECT N°	DESCRIPTION			CODE N° DIST
		TYPE	WIDTH	THICKNESS	
		Earth	25'6"		No Record of Constr. Added in 1929. 50' B.S.
		Gravel	36'6"	1 1/2" 2"	No Record of Constr. Added in 1929. 30' B.S. & 32' Beam.
		Sandy	24'	2"	No Record of Constr. Added in 1929. 105' Bridge.
1931		Gravel	22'	1 1/2"	Maint. Dept.
1931	72-72-22	Grading	26'		Maint. Dept.
1932	72-72-22	Gravel Surf.	24'	1 1/2"	650 C.Y./Mile.
		Clay & Gr. Base	24'	5"	2500 C.Y./Mile.
1932		Gravel	22'	1 1/2"	Maint. Dept.
		Br. N° 3529	23'		90' B.S.
1935		Gravel	24'	2"	Mainl. Dept.
1935		Asph. Tr. Gravel	30'	1"	Maint. Dept.
1936		Gravel	22'	3" 4"	600-900 C.Y./Mile. 28' B.S.
1936		Gravel	22'	7" 12"	3500-5500 C.Y./Mile. Maint. Dept.
1936	72-72-22	Gravel Surf.	22'	1" 2"	600-1000 C.Y./Mile.
		Sand & Clay Base	22'	8"	Maint. Dept.
1936	72-72-22	Gravel	22'	18"	6000 C.Y./Mile. Maint. Dept.
		A.F.E. 11, 12, 14	24'	5"	
1937	15.1719.28829	Gravel Lifts	24'	5"	
		Mixed Bit. Surf.	24'	1 1/2"	Maint. Dept.



YEARS		TOTAL MILES	UNINCORPORATED		INCORPORATED		RURAL		URBAN	
FROM	TO		ROWY. MI.	BR. MI.	ROWY. MI.	BR. MI.	ROWY. MI.	BR. MI.	ROWY. MI.	BR. MI.
1929	1957	42.07	40.44	0.05	1.60	0.00	42.04	0.03	0.00	0.00
1958	1960	40.38	38.80	0.03	1.55	0.00	40.35	0.03	0.00	0.00
1961	1965	35.54	34.41	0.02	1.51	0.00	35.53	0.02	0.00	0.00
1966		35.91	34.36	0.02	1.51	0.00	35.89	0.02	0.00	0.00

REMARKS: Layout is to scale as of 1929

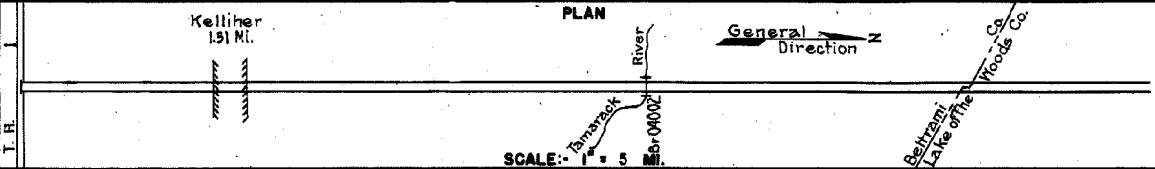
(1) This work not done under this project number but lies within the limits of this project

PREPARED BY
HIGHWAY PLANNING SURVEY
IN COOPERATION WITH
U.S. PUBLIC ROADS ADMINISTRATION

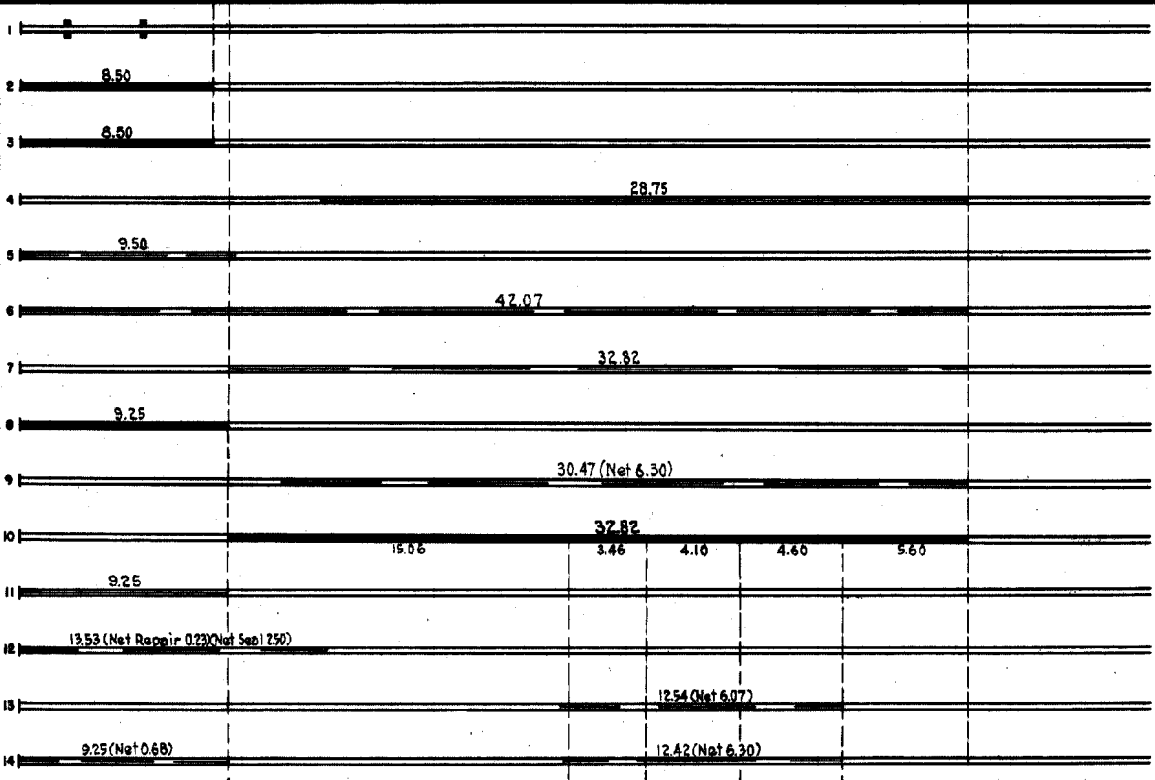
STATE OF MINNESOTA
DEPARTMENT OF HIGHWAYS
ROAD LIFE STUDIES
CONSTRUCTION PROJECT LOG RECORD

CONTROL SECTION 0413
TRUNK HIGHWAY 72
COUNTY Beltrami
DISTRICT 2A

LIMITS: Jct. T.H. - N. Co. Line



YEAR BUILT	PROJECT N°	DESCRIPTION			CODE N° DIST.
		TYPE	WIDTH	THICKNESS	
1938		Br. 1279 Br. 1252	27'		Widen by Br. Maint. 30 B.S. 29 B.S.
1938	A.F.E. 23	Sand Lift	28'	5 1/2"	Maint. Dept.
1940	A.F.E. 29	Sand Lift Bit Surf. Treat.	28' 24'	9" 3/4"	Maint. Dept.
M	1941	A.F.E. 16			RC-2, 1609 Gal./Mi. Agg. 34 C.Y./Mi. Maint. Dept.
M	1942	A.F.E. 5			Bit. 1073 Gal./Mi. Grav. 33 C.Y./Mi. Maint. Dept.
M	1943	A.F.E. 4			Spot Treat. Bit Surf. Repair
M	1945	A.F.E. 4			MC1, 4576 Gal./Mi. Maint. Dept.
M	1945	A.F.E. 4			Spot Treat. Bit Surf. Repair
C	1945	A.F.E. 23			MC2, 1173 Gal./Mi. Maint. Div.
M	1946	A.F.E. 4			Bit. Resurfacing Mixed Bit.
M	1947	A.F.E. 28			RT-5, 7909 Gal./Mi. Grav. 409 C.Y./Mi. Maint. Div.
M	1949	A.F.E. 5			SC-3, 2530 Gal. Agg. 250 C.Y.
M	1951	A.F.E. 4			SC-3, 218007 Gal. Agg. 16056 tons
M	1951	A.F.E. 21			RC5-0&2, 21067 Gal. Agg. 580 C.Y.
M	1951	A.F.E. 4			SC2, 7400 Gal. Agg. 225 C.Y.
M	1951	A.F.E. 21			Spot Base Repair Restores Bit. Surf. (Mixed Prime)
M	1952	A.F.E. 4 A.F.E. 24			SC2, 8274 Gal. Base 21426 Tons
M	1952	A.F.E. 4 A.F.E. 24			Spot Treat. Bit Surf. Repair
M	1952	A.F.E. 4 A.F.E. 24			SC31 MC3, 26334 Gal. Agg. 3513 Gal.



YEARS		TOTAL MILES	UNINCORPORATED		INCORPORATED		RURAL		URBAN	
FROM	TO		RDWY. MI.	BR. MI.	RDWY. MI.	BR. MI.	RDWY. MI.	BR. MI.	RDWY. MI.	BR. MI.

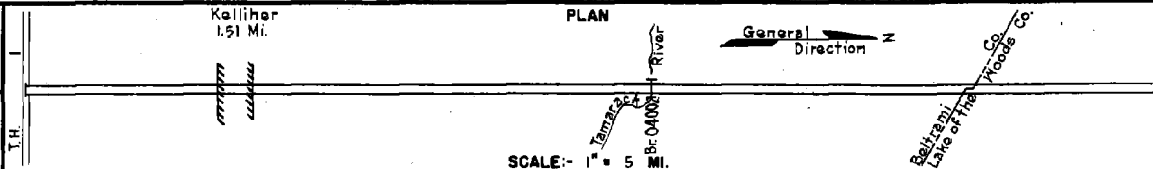
REMARKS: See Sheet No 1

PREPARED BY
HIGHWAY PLANNING SURVEY
IN COOPERATION WITH
U.S. PUBLIC ROADS ADMINISTRATION

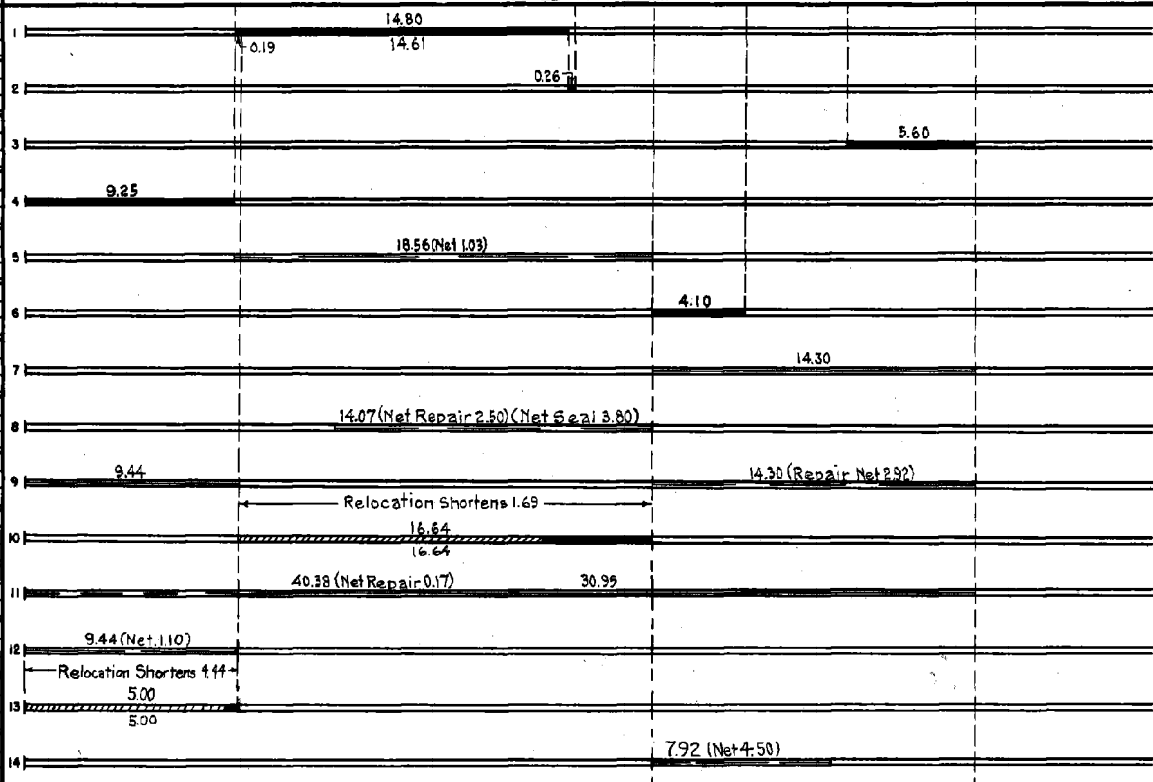
STATE OF MINNESOTA
DEPARTMENT OF HIGHWAYS
ROAD LIFE STUDIES
CONSTRUCTION PROJECT LOG RECORD

CONTROL SECTION 0413
TRUNK HIGHWAY 72
COUNTY Baltrami
DISTRICT 2A

LIMITS: E. Jct. T.H. 1 - N. Co. Line



YEAR BUILT	PROJECT NO.	DESCRIPTION			CODE NO. DIST.
		TYPE	WIDTH	THICKNESS	
1952	A.F.E. 18	Bit Resurfacing Mixed Bit.	22'	1 1/2" added	SC3, 120734 Gal. Agg. 10166 Tons
1952	A.F.E. 21	Grading Bit Surfacing Mixed Bit.	34'	2"	MC2, 4200 Gal. Agg. 452 C.Y. (Mixed Prime)
1952	A.F.E. 23	Gravel Base Mixed Bit. (Mixed Prime)	28'	3 1/2" added thickness 26'	1 1/2" MC2, 85468 Gal. Agg. 7240 Tons
1953	A.F.E. 818	Bit Resurfacing Mixed Bit.	24'	1" added	MC-3, 85395 Gal. Agg. 6832 Tons
1954	A.F.E. 604	Spot Treat Bit Surf. Repair	20'		MC2, 7047 Gal. Agg. 538 Tons
1954	A.F.E. 819	Stab. Sand Base Mixed Bit. (Mixed Prime)	27'	7" added thickness 26'	1 1/2" MC2, 50568 Gal. Agg. 4881 Tons
1956	A.F.E. 605	Light Bit Seal	24'		RCS-2, 24720 Gal. Agg. 888 C.Y.
1957	A.F.E. 604	Spot Treat Bit Surf. Repair Spot Light Bit Seal	420'		MC2, 20170 Gal. Agg. 600 Tons
1958	A.F.E. 604	Spot Treat Bit Surf. Repair	24'		Seal (RC2) 15844 Gal. Bit (Repair) 5550 Gal.
1958	A.F.E. 605	Light Bit Seal	25'		Agg. 543 C.Y. 6350 Tons
1958	0413-04	Grading	31'		158
1958	0413-09	Sand Grv. Subbase	31'	3"	On 12" min. Granular Mat'l. 1258
1958	0413-07	Mixed Bit (Base)	31'	2"	258
1959	A.F.E. 604	Bit Surf. Repair (40.8M)	24'		Bit (Repair) MC2, 1500 Gal. Agg. 126 Tons
1959	A.F.E. 605	Light Bit Seal (30.95M)	24'		Agg. 1903 C.Y.
1960		Spot Treat Bit Surf. Repair	24'		SC-2, 8750 Gal. Agg. 638 Tons
1961	0413-10	Grading Sub-base & Base Plant Mix Bit (Base)	450'	1 1/2" on 6" of Sub-base	3'-4" of Gravel Base 161
1961		Spot Treat Bit Surf. Repair	24'		Bit 22,527 Gal.



YEARS		TOTAL MILES	UNINCORPORATED		INCORPORATED		RURAL		URBAN	
FROM	TO		RDWY. MI.	BR. MI.	RDWY. MI.	BR. MI.	RDWY. MI.	BR. MI.	RDWY. MI.	BR. MI.

REMARKS: See Sheet No. 1
FOR OTHER PROJECTS SEE DIST. NO. 1557

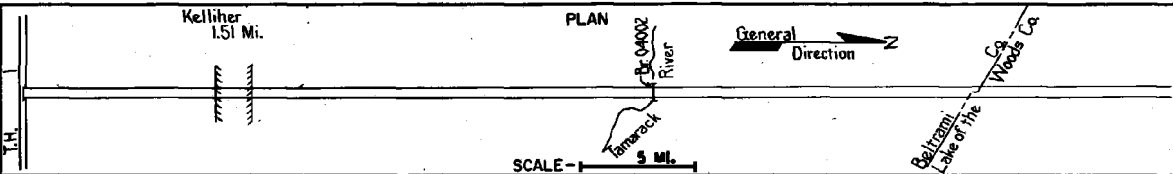
PREPARED BY
TRAFFIC AND PLANNING DIVISION
IN COOPERATION WITH
U.S. DEPARTMENT OF COMMERCE
BUREAU OF PUBLIC ROADS

STATE OF MINNESOTA
DEPARTMENT OF HIGHWAYS
ROAD LIFE STUDIES
CONSTRUCTION PROJECT LOG RECORD

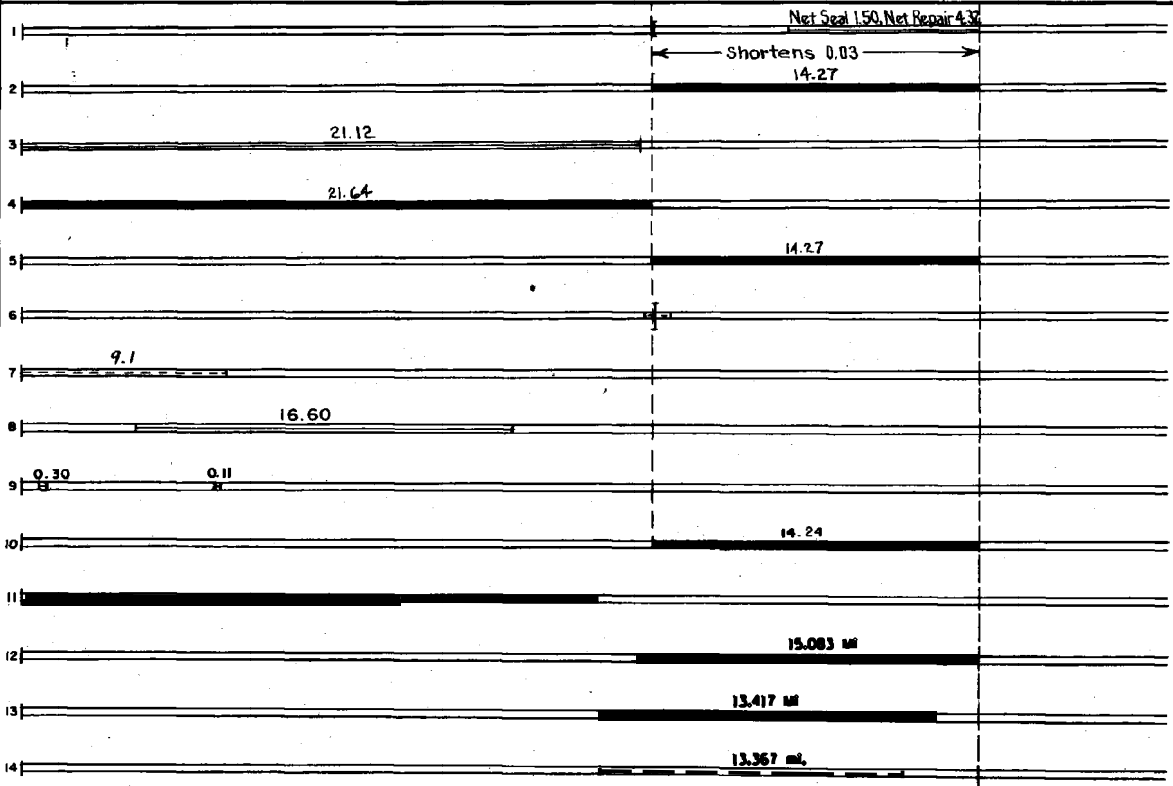
CONTROL SECTION 0413
TRUNK HIGHWAY 77
COUNTY Beltrami
DISTRICT 2A

LIMITS: E Jct. TH. 1-N Co. Line

Ref. Pt. 014-00,970 - 050-00,885



Dist. No.	YEAR BUILT	PROJECT NO	DESCRIPTION				REMARKS
			TYPE	WIDTH	THICKNESS		
861	1962	0413-04002	Dr. 04002	30'		135 Prestressed C.S.	
			Bit Surf Repair	24'	1"	MC-2, 28629 Gal.	
			Light Bit Seal	24'		MC-2, 3100 Gal.	
166	1966	0413-12	Grading Rt. & Lt. of rdwy imp				
			Sub base Gravel Base Plant Mix Bit. (Base)	25'	1 1/2"		
1066	1966	C	Light Bit. Seal	25'		RC-250, 48951 Gal. Agg. 1391 C.Y.	
168	1968	0413-14	Pl. Mix. Bit. Surf. Gravel Shldr.	24' 52"	4" 2"	Bit. Mat'l. 3442 Ton 4' Rt. & Lt.	
768	1968	0413-15	Pl. Mix. Bit. Surf. Gravel Shldr.	24'	2"	Bit. Mat'l. 1366 Ton 6' Rt. & Lt.	
1175	1975	0413-18	PLATE BEAM GUARD RAIL			300 Lin. Ft.	
976	1976	0413-19	REMOVE & INSTALL GUARDRAIL			412 LIN. FT. 3-CABLE	
M	1982	SF	Bit. Seal Coat	24'		48,914 Gal. # 2386	
M	1983	SF	Seal Bit. Overlay	24'	1 1/2"	Pl. Mix 2331-74.0 Tons	
C	1985	0413-22	Bit. Removal	24'		Remove Insp. Bit.	
			Bit. Surfacing	24'	2 1/2"	Sp 2331	
			Agg. Shoulders	8'	Var.		
C	1989	0413-24	Bit. Overlay	28'	3"	Spec 2331	
			Agg. Shouldering	5'			
C	1994	0413-25	Aggregate Seal				
			Bit. Overlay	24'	Var.	Spec. 2341	
C	1997	0413-27	Grading	28'			
			Bit. Overlay Agg. Base	28'	4" Var.	Class 5	
M	1999	8822-06	Agg. Seal			Final Agg. Number 2	



YEARS		TOTAL MILES	UNINCORPORATED		INCORPORATED		RURAL		URBAN	
FROM	TO		RDWY. MI.	BR. MI.	RDWY. MI.	BR. MI.	RDWY. MI.	BR. MI.	RDWY. MI.	BR. MI.

REMARKS: See Sheet No. 1
For Other Projects See Dist. No. 865

PREPARED BY
 BUREAU OF POLICY & PLANNING
 IN COOPERATION WITH
 U. S. DEPARTMENT OF TRANSPORTATION - FEDERAL HIGHWAY ADMINISTRATION

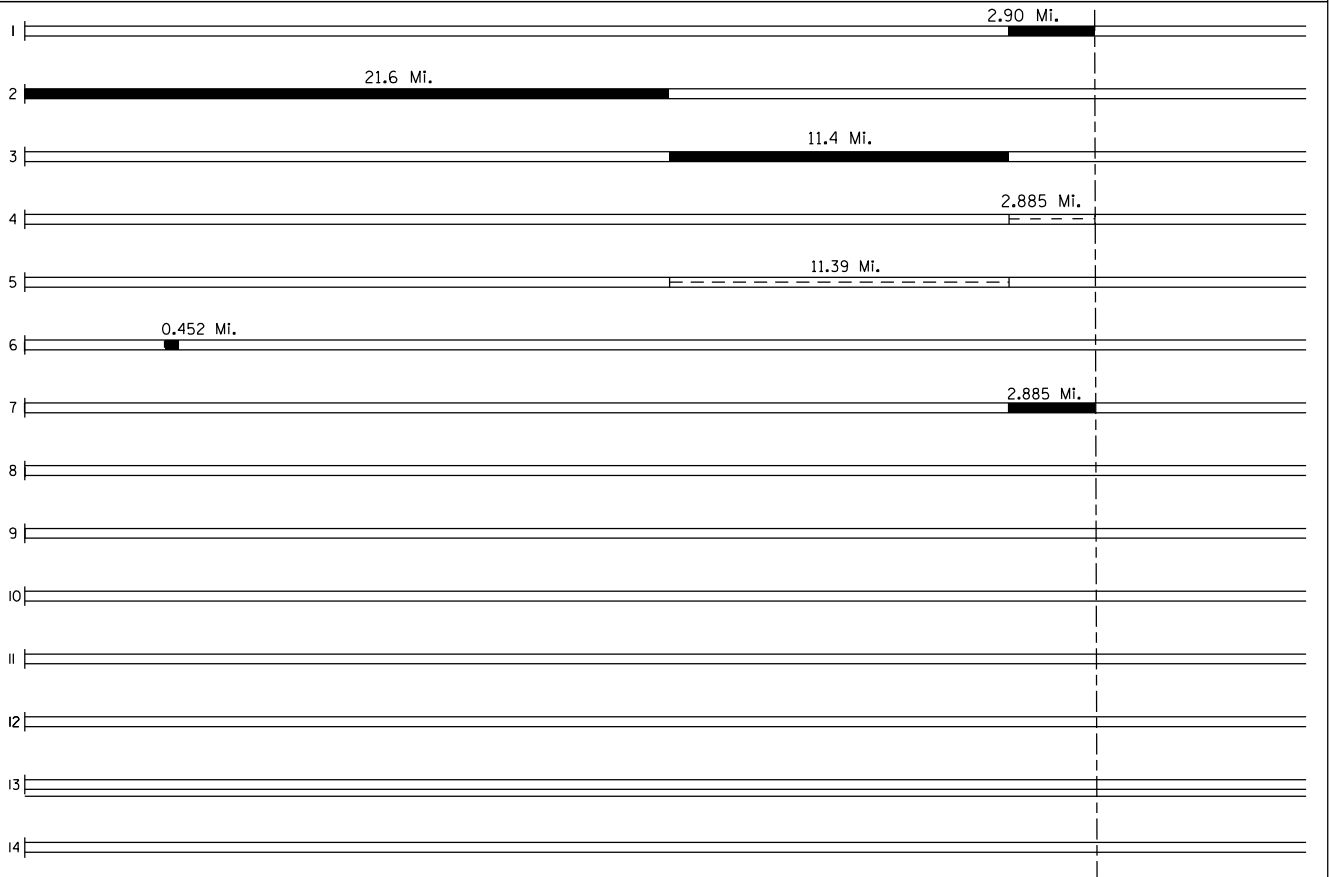
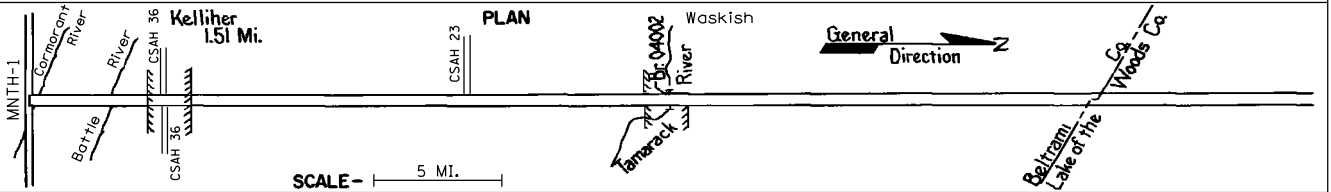
STATE OF MINNESOTA
 DEPARTMENT OF TRANSPORTATION
 CONSTRUCTION PROJECT LOG RECORD

CONTROL SECTION 0413
 TRUNK HIGHWAY 72
 COUNTY Beltrami
 DISTRICT 2A

LIMITS: E. Jct. MNTH 1 - Beltrami/Lake of the Woods Co. Line

Ref. Pt. 014+00.970 - 050+00.885

YEAR BUILT	PROJECT No	DESCRIPTION				
		TYPE	WIDTH	THICKNESS	REMARKS	
C 2005	0413-30	Reclamation Mill & Bit. Overlay	24' 24'	9" var.	Spec. 2360	
C 2007	0413-31	Milling Bit. Overlay Aggregate Shldr	24' var.	Box var.	Culvert # 04X03 Spec. 2360 Class 1	
C 2011	0413-33	Milling Bit. Reclamation Bit. Overlay	28' 28'	3" 10" 5"	Spec. 2360	
M 2013	8822-151	Bit. Seal Coat	26'		Type F2	
M 2016	8822-192	Bit. Seal Coat	28'		Type FA-2	
C 2018	0413-39	Grading Bit. Surfacing & ADA imp.	var.	5" var.	City of Kelliher 5' agg. shldr cl. 5	
C 2019	0413-41	Milling Bit. Overlay Agg. Surf. shldr	28' 4'	1 1/2" 2" var.	Spec. 2360 Cl. 1	



YEARS FROM TO		TOTAL MILES	UNINCORPORATED		INCORPORATED		RURAL		URBAN		REMARKS:
			RDWY. MI.	BR. MI.	RDWY. MI.	BR. MI.	RDWY. MI.	BR. MI.	RDWY. MI.	BR. MI.	

REMARKS: