

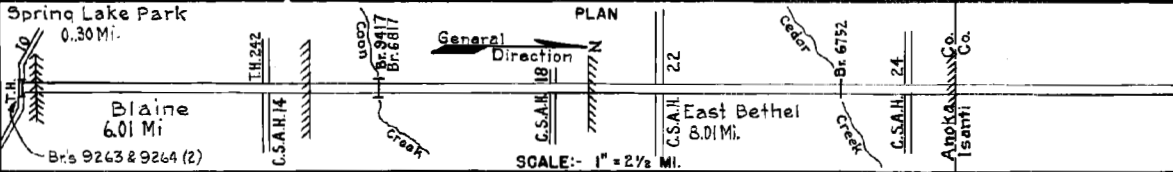
PREPARED BY
HIGHWAY PLANNING SURVEY
IN COOPERATION WITH
U.S. PUBLIC ROADS ADMINISTRATION

STATE OF MINNESOTA
DEPARTMENT OF HIGHWAYS
ROAD LIFE STUDIES
CONSTRUCTION PROJECT LOG RECORD

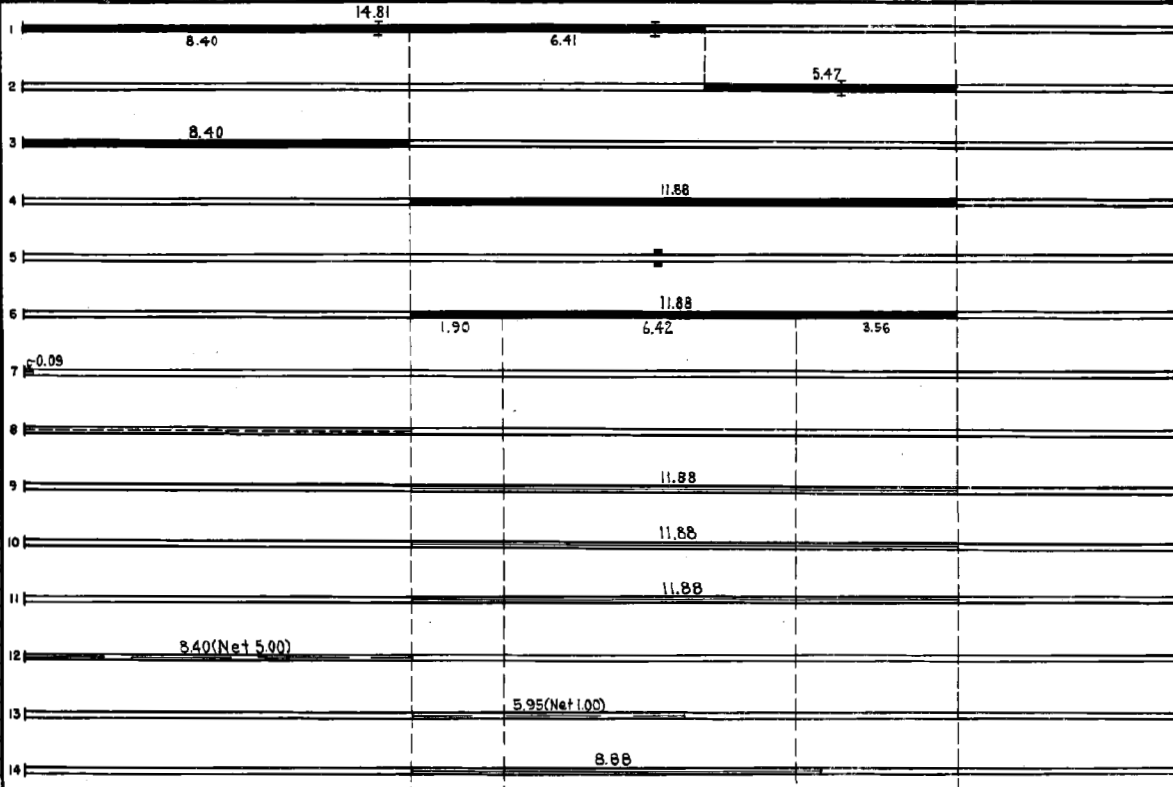
CONTROL SECTION 0208
TRUNK HIGHWAY 65
COUNTY Anoka
DISTRICT 5A33B

LIMITS: Jct. T.H.10 in Spring Lake Park - N. Limits of East Bethel (N. Co. Line)

Spring Lake Park
0.30 Mi.



YEAR BUILT	PROJECT N ^o	DESCRIPTION			CODE N ^o
		TYPE	WIDTH	THICK-NESS	
1920	65-5-1C, D & E	Grading Br. N ^o 3312 Br. N ^o 2381	23' 18'		23' B.S. 14' B.S.
1921	65-5-1F	Grading Br. N ^o 3313	33' 23'		30' B.S.
1924	65-5-34	Concrete	18'	7 1/2"	
1924	65-5-34	Gravel	24'	2 1/2"	1100 C.Y./Mile.
1926		Br. N ^o 2381	27'		14' B.S. Br. Widening.
1927	65-5-34	Tar Tr. Gravel	22'	1 1/2"	Maint. Dept.
1934	65-5-34	Roadside Develop.			Day Labor.
1939	A.F.E. 48	Stab. Grav. Should.	12'	2"	6 Rt. & Lt. Maint. Dept.
M	1941	A.F.E. 31	24'		AE-1, 4376 Gal./Mi. Agg. 119 T./Mi. Maint. Dept.
M	1947	A.F.E. 4	24'		RC-2, 17581 Gal. Agg. 138 C.Y.
M	1948	A.F.E. 4, 19 23 & 28	24'		Bit. Surf. Repair Spot Reshaping Grade Lifts & Bit. Curb 171924 Gal. Agg. 6023 C.Y.
M	1948	A.F.E. 24	24'		6 Rt. & Lt. 3000 C.Y. Earth 3414 C.Y. Gravel
M	1949	A.F.E. 4	24'		Spot Treat. Bit. Surf. Repair MC-3, 9361 Gal. Agg. 508 C.Y.
M	1950	A.F.E. 4	24'		RC-0, 12187 Gal. Agg. 320 C.Y.



YEARS		TOTAL MILES	UNINCORPORATED		INCORPORATED		RURAL		URBAN	
FROM	TO		ROWY. MI.	BR. MI.	ROWY. MI.	BR. MI.	ROWY. MI.	BR. MI.	ROWY. MI.	BR. MI.
1921	1950	20.28	20.27	0.01	0.00	0.00	20.27	0.01	0.00	0.00
1921	1952	20.26	20.25	0.01	0.00	0.00	20.25	0.01	0.00	0.00
1923	1953	20.26	19.93	0.01	0.27	0.00	20.25	0.01	0.00	0.00
1924	1952	20.26	13.97	0.01	6.28	0.00	14.99	0.01	5.26	0.00
1927	1953	20.26	5.96	0.01	14.29	0.00	6.23	0.00	14.02	0.00
1926	1960	20.26	5.96	0.01	14.29	0.00	5.96	0.00	14.29	0.00
1960		20.27	5.96	0.01	14.32	0.00	5.96	0.00	14.32	0.00

REMARKS: Layout is to scale as of 1921

- (1) This work not done under this project number but lies within the limits of this project.
- (2) Br. 9263 W.B.T.H.10 over, Br. 9264 E.B.T.H.10 over, done on C.S. 0203 also turning lanes at interchange constructed.

PREPARED BY
HIGHWAY PLANNING SURVEY
IN COOPERATION WITH
U.S. PUBLIC ROADS ADMINISTRATION

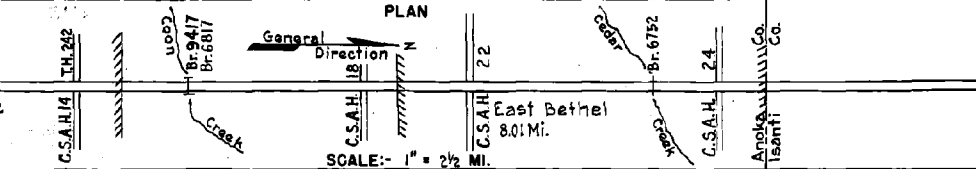
STATE OF MINNESOTA
DEPARTMENT OF HIGHWAYS
ROAD LIFE STUDIES
CONSTRUCTION PROJECT LOG RECORD

CONTROL SECTION 0208
TRUNK HIGHWAY 65
COUNTY Anoka
DISTRICT 5A&3B

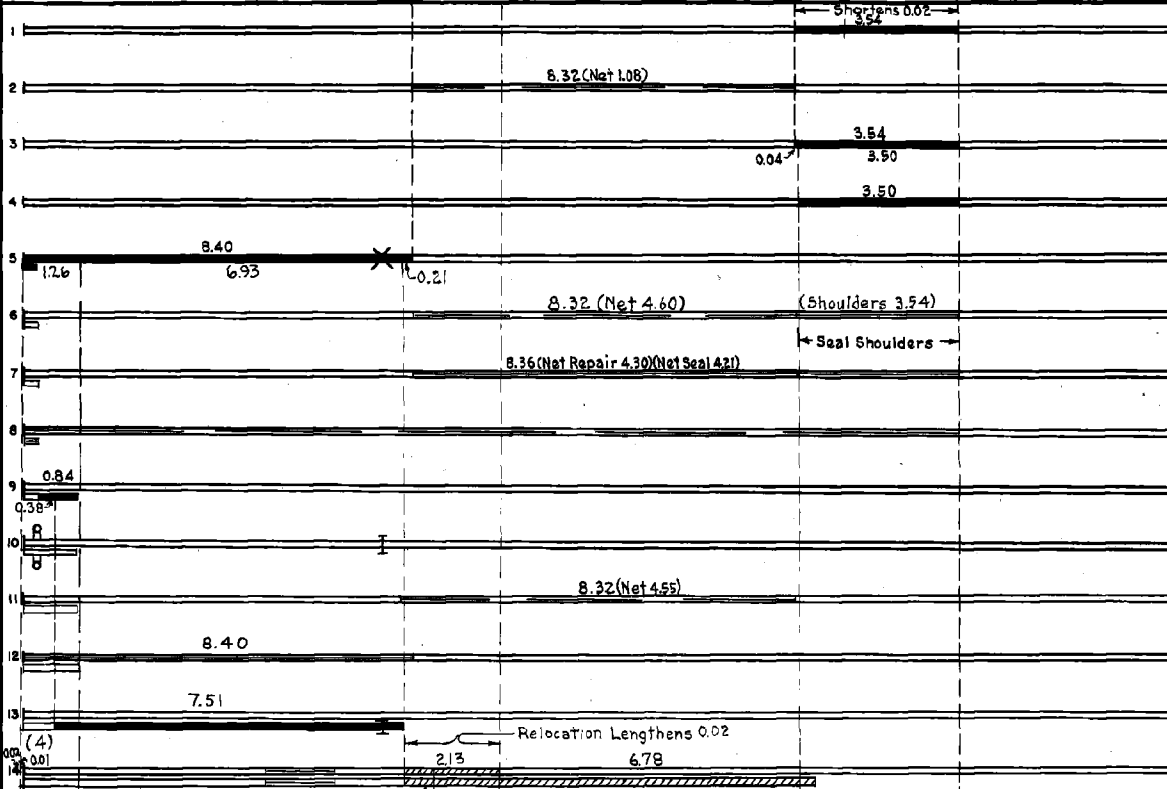
LIMITS: Jct. T.H. 10 in Spring Lake Park - N. Limits of East Bethel (N. Co. Line)

Spring Lake Park
0.30 Mi.

Blaine
6.01 Mi.
Br's 9263 & 9264 (2)



YEAR BUILT	PROJECT N ^o	DESCRIPTION			CODE N ^o
		TYPE	WIDTH	THICKNESS	
C	1951 0208-02	Grading Salvaged Bit. Br. 6752	44'	2 3/4"	
M	1951 A.F.E. 4	Spot Treat. Bit. Surf. Repair	24'		
C	1951 A.F.E. 43	Bit. Surfacing Mixed Bit.	24'	1"	
C	1952 0208-06 A.F.E. 43	P.C. Concrete	22'	9 7/8"	
C	1952 0208-04	Grading Concrete Base (1) Plant Mix Bit.	40' 6' 24'	8" 3"	
M	1953 A.F.E. 604	Spot Treat. Bit. Surf. Repair Prime Shoulders	24'		
M	1954 A.F.E. 604 A.F.E. 605	Spot Treat. Bit. Surf. Repair Spot Light Bit. Seal	24'		
M	1954 A.F.E. 830	Topsoil Slopes and Ditches			
C	1954 0208-10 (2)	Grading Concrete Base Plant Mix Bit.	36' 24' 24'	8" 3"	
C	1954 0208-11 0208-08	Traffic Signals Br. 6817	40'		
M	1955 A.F.E. 605	Spot Light Bit. Seal	24'		
M	1958 A.F.E. 605	Light Bit. Seal	25'		
C	1959 0208-18 0208-17	Grading, Base Plant Mix Bit. Br. 9417 (3)	38' 24' 36'	7 1/2" 3"	
C	1960 0208-16 0208-21	Grading, Bit. Base Plant Mix Bit. Surf. Const. Frontage Road	22' 24'	3"	



YEARS FROM	TOTAL MILES TO	UNINCORPORATED		INCORPORATED		RURAL		URBAN	
		RDWY. MI.	BR. MI.	RDWY. MI.	BR. MI.	RDWY. MI.	BR. MI.	RDWY. MI.	BR. MI.

REMARKS: See Sheet No. 1 (1) Old 18' P.C. Conc. widened 6' with P.C. Conc. and surfaced with Pl. Mix Bit. Old P.C. Conc. buried under select material base in spots on 1.92 miles. (2) Contract not final but work substantially complete. (3) N.B. Rdwy. (4) 0.03 Mi. of 2-24' P.C. conc. rdwys transferred from C.S. 0207 (T.H. 65) in 1960

PREPARED BY
TRAFFIC AND PLANNING DIVISION
IN COOPERATION WITH
U.S. DEPARTMENT OF COMMERCE
BUREAU OF PUBLIC ROADS

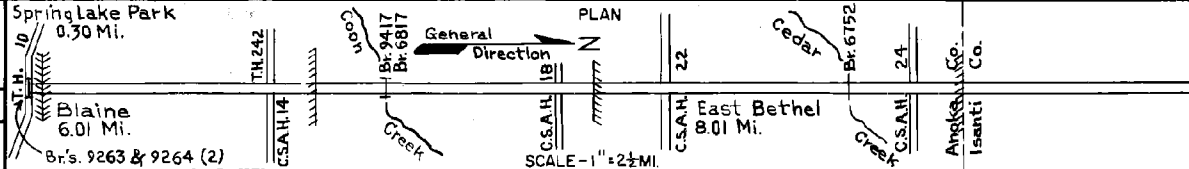
STATE OF MINNESOTA
DEPARTMENT OF HIGHWAYS
ROAD LIFE STUDIES
CONSTRUCTION PROJECT LOG RECORD

CONTROL SECTION 0208
TRUNK HIGHWAY 65
COUNTY Anoka
DISTRICT 2A & 3

LIMITS: Jct. T.H. 10 in Spring Lake Park - N. Limits of East Bethel (N. Co. Line)

Spring Lake Park
0.30 Mi.

Blaine
6.01 Mi.
Br.s. 9263 & 9264 (2)



YEAR BUILT	PROJECT NO.	DESCRIPTION			
		TYPE	WIDTH	THICKNESS	REMARKS
C 1964	0208-19	Grading Base* & Plant mix Bit. on S.B. Rdwy.	24'	*7 1/2" 3"	The 0.23 mi. is grade revision 2 @ 24" Plant mix Bit. surf.
C 1969	0208-23	Flasher Signals			at Jct. T.H. 242
	0208-24	Const. of Turning Lanes Traffic Signals			
M 1966	C	Spot Light Bit Seal Turn Lanes			S.B. Rdwy. CRS-1 9346 S.Y. 999 Gal. Lt. 92nd St. Lt. 97th St.
C 1970	0208-33	Asphaltic Conc. Overlay Pl. Mix Bit. Shoulders & Turn Lanes	20' 24' 3'-10'	2 1/2" 2"	1.26 Mi. on S.B. Rdwy. & 0.44 Mi. on N.B. Rdwy.
C 1970	0208-36	Asphaltic Conc. Overlay Pl. Mix Bit. Shoulders Turn Lanes	24' 3'-10'	2 1/2" 2"	S.B. Rdwy. Only S.B. Rdwy. Only S.B. & N.B. Rdwy.
C 1970	0208-39	Traffic Control Signal System			At Jct. T.H. 242 & C.S.A.H. 14 in Blaine
C 1971	0208-25	Grading & Base & Pl. Mix Bit. on N.B. & S.B.	24'	*5" 3"	
	0208-28	Pl. Mix. Bit. Shoulders	3'-10'	3"	
C 1971	0208-37	Asphaltic Conc. Surf. Turn Lanes	20' 24'	1 3/4"	S.B. Rdwy. Only S.B. & N.B. Rdwys.
C 1972	0208-41	Turn Lane			Left Turn on N.B. Rdwy. Castle lowers
C 1974	-42	TRAFFIC SIGNAL SYSTEM			AT C.S.A.H. 18
C 1978	0208-47	Pl. Mix Bit. SURFACING Pl. Mix Bit. Shoulders	20' 24' 16'-4'	1 3/4"	
C 1976	0208-44	TRAFFIC SIGNAL SYSTEM			C.S.A.H. 32 (Co. Rd. J-15th Av.) T.H. 242 - C.S.A.H. 14
C 1980	0208-51	Traffic Signal System			C.R.N. 12 (Waukegan Blvd.)
C 1980	0208-54	Traffic Signal System			C.R.N. 22 (Viking Blvd.) in East Bethel



YEARS		TOTAL MILES	UNINCORPORATED		INCORPORATED		RURAL		URBAN	
FROM	TO		RDWY. MI.	BR. MI.	RDWY. MI.	BR. MI.	RDWY. MI.	BR. MI.	RDWY. MI.	BR. MI.

REMARKS: See Sheet No. 1

