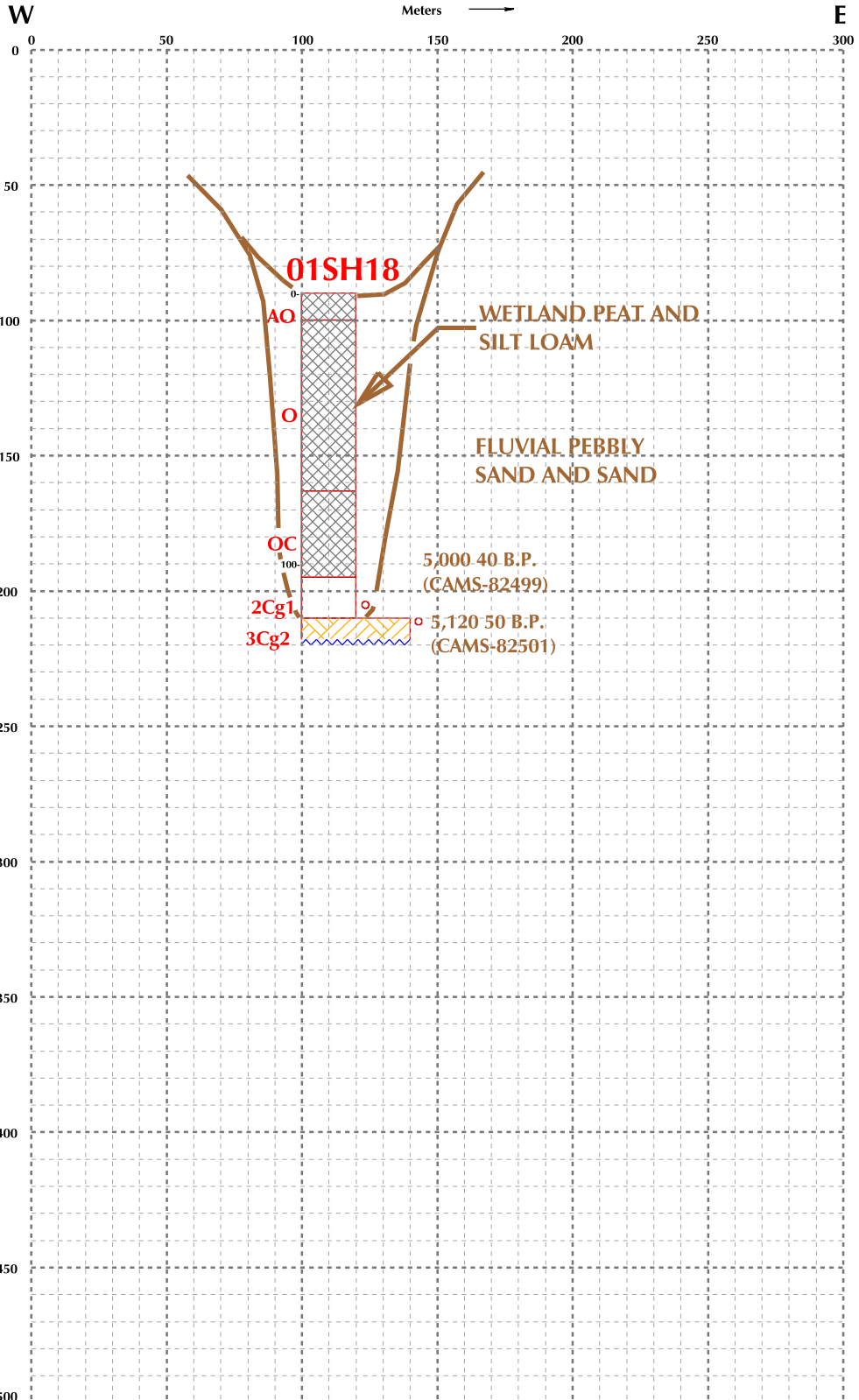
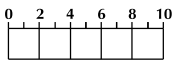


Elevation:  
292 Meters  
(958 Feet)



**TEXTURE**

- 1 Clay or Sandy Clay
- 2 Silty Clay
- 3 Silty Clay Loam, Clay Loam, or Sandy Clay Loam
- 4 Silt Loam, Silt, Loam, Marl, or Peat
- 5 Sandy Loam
- 6 Loamy Sand
- 7 Very Fine to Fine Sand
- 8 Medium Sand
- 9 Coarse Sand
- 10 Gravel



Textures

**LEGEND**

- Solum
- Plant Matter for C-14
- Shells
- Break for Graphic Representation
- Gravel
- Peat/Organic Soil
- Sand
- No Recovery



**MINNESOTA DEPARTMENT OF TRANSPORTATION**

**FIGURE 15D**  
GRAPHIC SEDIMENT/ SOIL LOGS OF THE VT2 AND VB2  
LANDFORM SEDIMENT ASSEMBLAGES ALONG TRANSECTS  
CONTAINING CORES 01SH04-05, 06-07, 08-09, AND 01SH18



DEPARTMENT OF TRANSPORTATION  
UNITED STATES OF AMERICA

Scale: AS SHOWN

Date: JUNE, 2002

By: CKV